

CITY ORDINANCE NO. CO-088-2022

**AN ORDINANCE OF THE LAFAYETTE CITY COUNCIL PROVIDING FOR
REDISTRICTING OF LAFAYETTE CITY COUNCIL DISTRICTS AND THE
ADOPTION OF CITY OF LAFAYETTE – ALTERNATIVE PLAN 4 TO ESTABLISH
NEW LAFAYETTE CITY COUNCIL DISTRICTS IN ACCORDANCE WITH THE 2020
FEDERAL CENSUS BY THE UNITED STATES BUREAU OF THE CENSUS**

BE IT ORDAINED by the Lafayette City Council, that:

WHEREAS, Section 2-2 of the Lafayette City-Parish Consolidated Government Home Rule Charter (“LCG Charter”) provides, in pertinent part, that following the federal census by the United States Bureau of the Census, “the City Council ... by ordinance shall, if necessary, alter, change or rearrange Council district boundaries so as to provide for population equality among the districts as near as reasonably practicable”; and

WHEREAS, the 2020 Federal Census has now been performed and the information reported in said Census has revealed the need to redistrict the Lafayette City Council Districts in accordance with all applicable provisions of law; and

WHEREAS, the Lafayette City Council, pursuant to and in accordance with the 2020 Federal Census, wishes to redistrict and establish new Lafayette City Council Districts with new territorial limits and boundaries and to designate said Lafayette City Council Districts in accordance with its redistricting plan; and

WHEREAS, the Lafayette City Council has engaged the services of a demographer who has prepared and provided to the Lafayette City Council four (4) alternative redistricting plans for review and consideration.

NOW, THEREFORE, BE IT FURTHER ORDAINED by the Lafayette City Council, in its capacity as the governing authority of the City of Lafayette, that:

SECTION 1: All of the aforementioned “Whereas” clauses are adopted as part of this ordinance.

SECTION 2: The Lafayette City Council does hereby adopt “City of Lafayette – Alternative Plan 4”, as attached hereto, and made a part hereof, as Exhibit City Plan 4-A (Map), Exhibit City Plan 4-B (statistical information on population by race, on the 18+ population by race, and registered voters by race), and Exhibit City Plan 4-C (the voting districts/precincts in each Lafayette City Council District) as its Lafayette City Council Districts such that the five (5) Lafayette City Council Districts, as redistricted, shall be those Lafayette City Council Districts depicted in such Plan of Redistricting.

SECTION 3: The Clerk of the Lafayette City Council, in coordination with the contracted Demographer, is hereby authorized to file and send all paper or other documents

including, but not limited to, a certified copy of this ordinance, with Exhibits, to all necessary State and local Officials, including but not limited to, the Louisiana Secretary of State, the Secretary of the Louisiana State Senate, the Clerk of the Louisiana House of Representatives, the Clerk of Court of Lafayette Parish, and/or the Registrar of Voters of Lafayette Parish, pursuant to any applicable provisions of law, and take any and all other action necessary in connection therewith.

SECTION 4: Each of the five (5) new Lafayette City Council Districts herein adopted shall be represented by a Lafayette City Council Member elected from his or her respective new Lafayette City Council District.

SECTION 5: All ordinances or resolutions or parts thereof in conflict herewith are hereby repealed.

SECTION 6: In accordance with the provisions of Section 2-13(D) of the Lafayette City-Parish Consolidated Government Home Rule Charter, this city ordinance is not subject to the veto power of the Lafayette Mayor-President and, accordingly is effective upon signature of the Lafayette Mayor-Parish President, or the elapse of ten (10) days after receipt by the Lafayette Mayor-Parish President without signature, whichever occurs first.

* * * * *

Exhibit City Plan 4-A (Map)

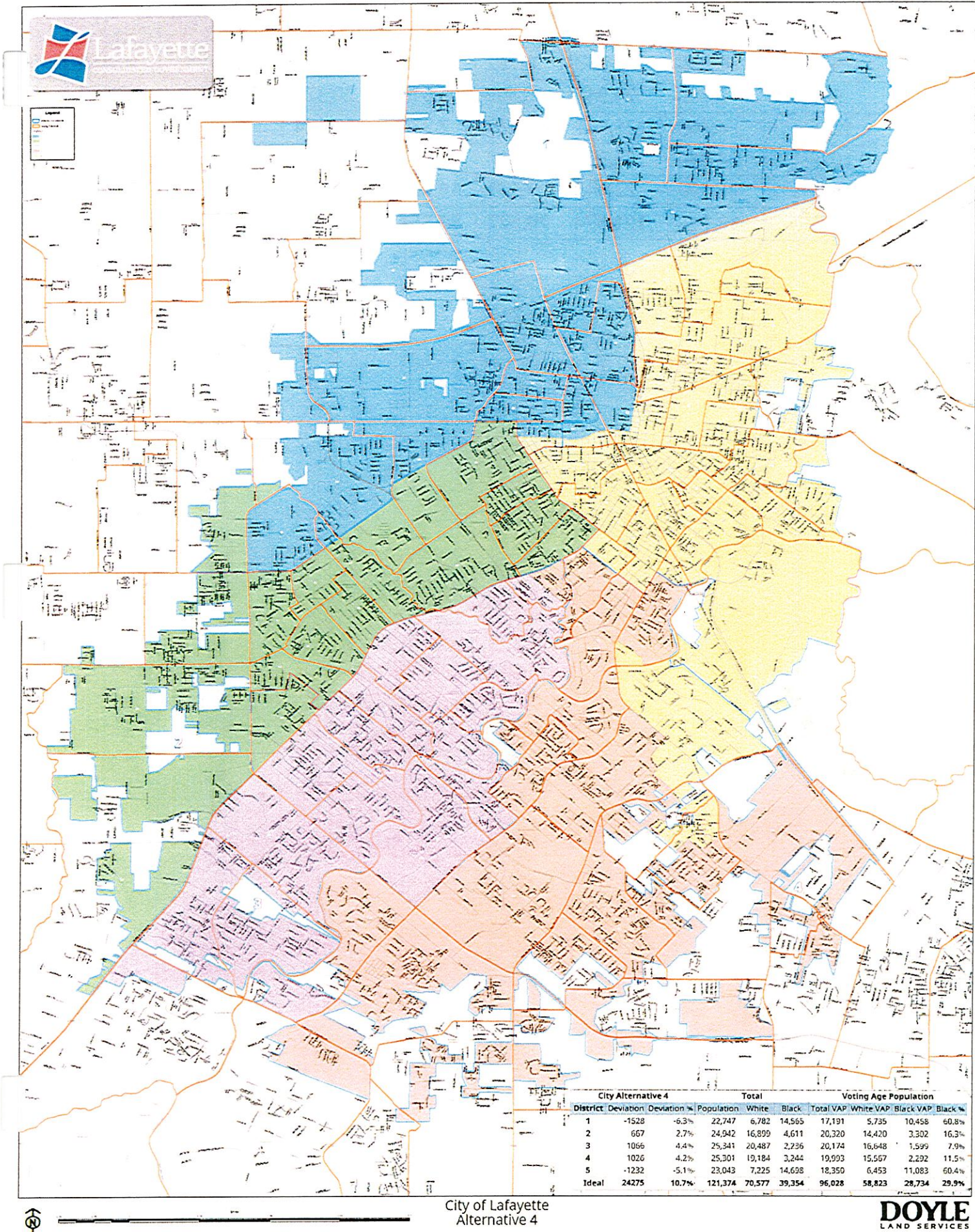


Exhibit City Plan 4-B

City Alternative 4			Total			Voting Age Population			
District	Deviation	Deviation %	Population	White	Black	Total VAP	White VAP	Black VAP	Black %
1	-1528	-6.3%	22,747	6,782	14,565	17,191	5,735	10,458	60.3%
2	667	2.7%	24,942	16,899	4,611	20,320	14,420	3,302	16.2%
3	1066	4.4%	25,341	20,487	2,236	20,174	16,648	1,599	7.9%
4	1026	4.2%	25,301	19,184	3,244	19,993	15,567	2,292	11.5%
5	-1232	-5.1%	23,043	7,225	14,698	18,350	6,453	11,083	60.4%
Ideal	24275	10.7%	121,374	70,577	39,354	96,028	58,823	28,734	29.9%

Exhibit City Plan 4-C**District 1:**

Precinct 6: That part of Precinct 6 that is within the corporate limits of the City of Lafayette.

Precinct 7: That part of Precinct 7 that is within the corporate limits of the City of Lafayette.

Precinct 9: That part of Precinct 9 that is within the corporate limits of the City of Lafayette.

Precinct 10: That part of Precinct 10 that is within the corporate limits of the City of Lafayette.

Precinct 11: That part of Precinct 11 that is within the corporate limits of the City of Lafayette.

Precinct 12: That part of Precinct 12 that is within the corporate limits of the City of Lafayette.

Precinct 13: That part of Precinct 13 that is within the corporate limits of the City of Lafayette.

Precinct 14

Precinct 17

Precinct 18

Precinct 19

Precinct 22

Precinct 23

Precinct 24: That part of Precinct 24 that is within the corporate limits of the City of Lafayette.

Precinct 25: That part of Precinct 25 that is within the corporate limits of the City of Lafayette.

Precinct 38: That part of Precinct 38 that is within the corporate limits of the City of Lafayette.

Precinct 39: That part of Precinct 39 that is within the corporate limits of the City of Lafayette and North of Dulles Drive and east of Coulee Mine.

Precinct 40: That part of Precinct 40 that is north of Eraste Landry Road.

Precinct 47: That part of Precinct 47 that is north of Dulles Drive.

Precinct 51: That part of Precinct 51 that is north of Cameron Street.

Precinct 52: That part of Precinct 52 that is north of Cameron Street and west of NW Evangeline Throughway.

Precinct 64: That part of Precinct 64 that is within the corporate limits of the City of Lafayette.

Precinct 112: That part of Precinct 112 that is within the corporate limits of the City of Lafayette.

Precinct 113: That part of Precinct 113 that is within the corporate limits of the City of Lafayette.

District 2:

Precinct 30: That part of Precinct 30 that is within the corporate limits of the City of Lafayette.

Precinct 31: That part of Precinct 31 that is within the corporate limits of the City of Lafayette.

Precinct 32: That part of Precinct 32 that is within the corporate limits of the City of Lafayette.

Precinct 33: That part of Precinct 33 that is within the corporate limits of the City of Lafayette.

Precinct 34: That part of Precinct 34 that is within the corporate limits of the City of Lafayette.

Precinct 35: That part of Precinct 35 that is within the corporate limits of the City of Lafayette.

Precinct 39: That part of Precinct 39 commencing at the Point of Beginning at the intersection of Galbert Road and Ambassador Caffery Parkway, then northerly along Galbert Road to the intersection of the corporate limits of the City of Lafayette, then easterly and southerly to the centerline of Ambassador Caffery Parkway, then southwesterly to the Point of Beginning. And, that part of Precinct 39 south of Dulles Drive.

Precinct 40: That part of Precinct 40 that is south of Eraste Landry Road.

Precinct 41

Precinct 42

Precinct 43

Precinct 44

Precinct 45

Precinct 46

Precinct 47: That part of Precinct 47 that is south of Dulles Drive.

Precinct 48

Precinct 49

Precinct 69

Precinct 70

Precinct 74: That part of Precinct 74 that is north of Johnston Street.

District 3:

Precinct 67: That part of Precinct 67 that is within the corporate limits of the City of Lafayette.

Precinct 74: That part of Precinct 74 that is south of Johnston Street and west of Ronald Boulevard.

Precinct 75

Precinct 76

Precinct 77

Precinct 78

Precinct 79

Precinct 80

Precinct 81

Precinct 82
Precinct 83
Precinct 84
Precinct 85
Precinct 86: That part of Precinct 86 that is within the corporate limits of the City of Lafayette.
Precinct 87
Precinct 120: That part of Precinct 120 that is within the corporate limits of the City of Lafayette and south of Willow Vine Drive.
Precinct 121: That part of Precinct 121 that is within the corporate limits of the City of Lafayette and southwest of the extension of Branton Drive.
Precinct 125: That part of Precinct 125 that is within the corporate limits of the City of Lafayette.

District 4:

Precinct 72: That part of Precinct 72 that is southeast of East Saint Mary Boulevard.
Precinct 73
Precinct 88
Precinct 89
Precinct 90: That part of Precinct 90 between East University Avenue and Jomela Drive.
Precinct 91: That part of Precinct 91 that is within the corporate limits of the City of Lafayette.
Precinct 92: That part of Precinct 92 that is within the corporate limits of the City of Lafayette and commencing at the Point of Beginning at the intersection of West Pinhook Road and the Vermillion River, then northeasterly to the intersection with the corporate limits of the City of Lafayette, then continue northeast to the centerline of SW Evangeline Throughway, then southerly to the intersection with the corporate limits of the City of Lafayette, then southwesterly to the centerline of East Verot School Road, then southwesterly to the intersection with the corporate limits of the City of Lafayette, then northwesterly, southwesterly and southeasterly, to the centerline of East Verot School Road, then southwesterly, to the centerline with Feu Follet Road, then northwesterly, to the centerline of Petroleum Drive, then northeasterly, to the centerline of Energy Parkway, then northwesterly and northeasterly to the centerline of West Pinhook Road, then northwesterly to the Point of Beginning.
Precinct 93: That part of Precinct 93 that is within the corporate limits of the City of Lafayette, and commencing at the Point of Beginning at the intersection of said city limits and Dolphin Street, then northeasterly to the centerline of Pompano Street, then northeasterly to the centerline of Barracuda Street, then northeasterly and southeasterly to the centerline of Pillette Road, then northeasterly to the centerline of Coulee Drive, then northeasterly to the centerline of Rural Street, then northwesterly to Verot School Road, then westerly along Verot School Road to the intersection of the city limits, then southeasterly and northeasterly to the Point of Beginning.
Precinct 94
Precinct 95: That part of Precinct 95 that is within the corporate limits of the City of Lafayette.
Precinct 96: That part of Precinct 96 that is within the corporate limits of the City of Lafayette.
Precinct 97: That part of Precinct 97 that is within the corporate limits of the City of Lafayette.
Precinct 98: That part of Precinct 98 that is within the corporate limits of the City of Lafayette.
Precinct 104: That part of Precinct 104 that is within the corporate limits of the City of Lafayette.
Precinct 105: That part of Precinct 105 that is within the corporate limits of the City of Lafayette.
Precinct 109: That part of Precinct 109 that is within the corporate limits of the City of Lafayette.
Precinct 115: That part of Precinct 115 that is within the corporate limits of the City of Lafayette.
Precinct 117: That part of Precinct 117 that is within the corporate limits of the City of Lafayette.
Precinct 120: That part of Precinct 120 that is within the corporate limits of the City of Lafayette and north of Timber Lane.
Precinct 121: That part of Precinct 121 that is within the corporate limits of the City of Lafayette and northeast of the extension of Branton Drive.
Precinct 126: That part of Precinct 126 that is within the corporate limits of the City of Lafayette.
Precinct 127: That part of Precinct 127 that is within the corporate limits of the City of Lafayette, and commencing at the Point of Beginning at the intersection of said city limits and Row One, then northwest to the intersection with an unnamed drainage canal south of Vieux Orleans Circle, then northeast along the drainage canal and city limits to the centerline with West Pinhook Road, then southeast to the centerline with Turn Row, then southwest to the centerline with Row Three, then northwest to the centerline with Row One, then southwesterly to the Point of Beginning.
Precinct 128: That part of Precinct 128 that is within the corporate limits of the City of Lafayette.

District 5:

Precinct 15
Precinct 16
Precinct 20
Precinct 21

Precinct 51: That part of Precinct 51 that is south of Cameron Street.

Precinct 52: That part of Precinct 52 that is south of Cameron Street and east of NW Evangeline Throughway.

Precinct 53

Precinct 54: That part of Precinct 54 that is within the corporate limits of the City of Lafayette.

Precinct 55: That part of Precinct 55 that is within the corporate limits of the City of Lafayette.

Precinct 56

Precinct 57

Precinct 58

Precinct 59: That part of Precinct 59 that is within the corporate limits of the City of Lafayette.

Precinct 60

Precinct 61

Precinct 62

Precinct 63

Precinct 65

Precinct 66

Precinct 68

Precinct 72: That part of Precinct 72 east of East Saint Mary Boulevard.

Precinct 90: That part of Precinct 90 excluding the areas between East University Avenue and Jomela Drive.

Precinct 92: That part of Precinct 92 that is within the corporate limits of the City of Lafayette and commencing at the Point of Beginning at the intersection of East Verot School Road and Rue Louis XIV, then northeasterly to the centerline with Feu Follet Road, then northwesterly, to the centerline of Petroleum Drive, then northeasterly, to the centerline of Energy Parkway, then northwesterly and northeasterly to the centerline of West Pinhook Road, then northwesterly to the centerline of Kaliste Saloom Road, then southeasterly to the Point of Beginning.

Precinct 93: That part of Precinct 93 that is within the corporate limits of the City of Lafayette, and commencing at the Point of Beginning at the intersection of said city limits and Dolphin Street, then northeasterly to the centerline of Pompano Street, then northeasterly to the centerline of Barracuda Street, then northeasterly and southeasterly to the centerline of Pillette Road, then southeasterly to the city limits, then counterclockwise around the city limits to the centerline of Rural Street, then northeasterly to the centerline of Verot School Road, then easterly along Verot School Road to the intersection of West Pinhook Road, then southerly to a drainage canal south of Merchants Boulevard, then southwesterly to the city limits, then northwesterly to the Point of Beginning.

Precinct 127: That part of Precinct 127 that is within the corporate limits of the City of Lafayette, and commencing at the Point of Beginning at the intersection of said city limits and Row One, then northwest to the intersection with an unnamed drainage canal south of Vieux Orleans Circle, then northeast along the drainage canal and city limits to the centerline with West Pinhook Road, then southeast to the centerline with Turn Row, then southwest to the centerline with Row Three, then northwest to the centerline with Row One, then southwesterly to the Point of Beginning.

Precinct 130: That part of Precinct 130 that is within the corporate limits of the City of Lafayette and east of SW Evangeline Throughway.



Internal Memorandum

Legal Department

TO: Veronica Williams, Clerk of the Council

CC: Nannette Cook, City Council Chairwoman, District 4

FROM: Paul D. Escott, Assistant City-Parish Attorney

SUBJECT: City Council Agenda Item – City Ordinance
June 7, 2022 Special Meeting – Introduction
June 21, 2022 Regular Meeting – Final Adoption


DATE: June 6, 2022

Vee,

On behalf of City Council Chairwoman Nanette Cook, I submit the following, to-wit:

**AN ORDINANCE OF THE LAFAYETTE CITY COUNCIL PROVIDING FOR
REDISTRICTING OF LAFAYETTE CITY COUNCIL DISTRICTS AND THE ADOPTION OF
CITY OF LAFAYETTE – ALTERNATIVE PLAN 4 TO ESTABLISH NEW LAFAYETTE CITY
COUNCIL DISTRICTS IN ACCORDANCE WITH THE 2020 FEDERAL CENSUS BY THE
UNITED STATES BUREAU OF THE CENSUS**

I respectfully request that this City Ordinance be placed on the June 7, 2022 Special Meeting Agenda for consideration, for introduction by the Lafayette City Council with consideration for final adoption at the regularly scheduled June 21, 2022 City Council meeting.



Paul D. Escott
Assistant City-Parish Attorney

LAFAYETTE CITY COUNCIL MEETING

AGENDA ITEM SUBMITTAL FORM

1) JUSTIFICATION FOR REQUEST: An Ordinance Of The Lafayette City Council Providing For Redistricting Of Lafayette City Council Districts And The Adoption Of City Of Lafayette – Alternative Plan 4 To Establish New Lafayette City Council Districts In Accordance With The 2020 Federal Census By The United States Bureau Of The Census.

2) ACTION REQUESTED: Adoption of City Ordinance

3) COUNCIL DISTRICT(S) (if applicable): N/A

4) REQUESTED ACTION OF COUNCIL:

A) INTRODUCTION: June 7, 2022

B) FINAL ADOPTION: June 21, 2022

5) DOCUMENTATION INCLUDED WITH THIS REQUEST:

A) Cover Memo (1 page)

B) City Ordinance (2 pages)

C) Exhibit City Plan 4-A (Map) (1 page)

D) Exhibit City Plan 4-B (1 page)

E) Exhibit City Plan 4-C (3 pages)

F) Agenda Item Submittal Form (1 page)

6) FISCAL IMPACT:

 Fiscal Impact

 X No Fiscal Impact

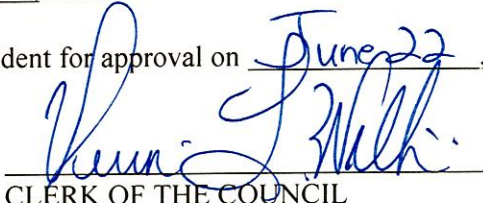

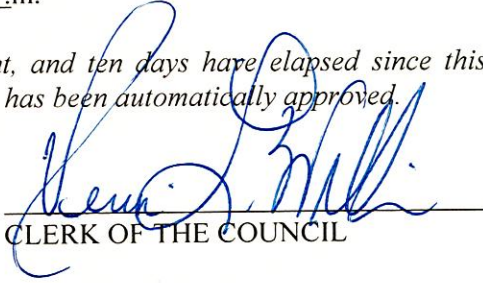
AUTHORED BY:

NANETTE COOK
City Council Chairwoman, District 4

SUBMITTED BY:


Paul D. Escott
Assistant City-Parish Attorney

DISPOSITION OF ORDINANCE NO. CO-088-2022

1. This ordinance was introduced: June 7, 2022
YEAS: Lewis, Naquin,
Hebert, Cook, Lazard
NAYS: None
ABSENT: None
ABSTAIN: None
- Final disposition by Council:
June 21, 2022
YEAS: Lewis, Naquin,
Hebert, Lazard
NAYS: None
ABSENT: Cook
ABSTAIN: None
2. Notice of Public Hearing: This ordinance was published by Title and Notice of Public Hearing was published in the Advertiser on June 10, 2022.
3. This ordinance was presented to the Mayor-President for approval on June 22, 2022, at 9:50 o'clock 2 .m.
- 
CLERK OF THE COUNCIL
4. Disposition by Mayor-President:
I hereby:
- A. Approve this ordinance, the 24 day of June, 2022, at 4:45 o'clock P.m.
- B. Veto this ordinance, the _____ day of _____, 2022, at _____ o'clock _____.m., veto message is attached.
- C. Line item veto certain items this _____ day of _____, 2022, at _____ o'clock _____.m., veto message is attached.
- 
MAYOR-PRESIDENT
5. Returned to Council Office with without veto message on June 24, 2022, at 4:45 o'clock P.m.
6. Reconsideration by Council (if vetoed):
On _____, 2022, the Council did/refused to adopt this ordinance after the Mayor-President's veto.
7. Returned to the Council Office without signature of Mayor-President (*unsigned*) on _____, 2022, at _____ o'clock _____.m.
- If not signed or vetoed by the Mayor-President, and ten days have elapsed since this ordinance was presented to him for action, same has been automatically approved.*
- 
CLERK OF THE COUNCIL
8. Full publication of this ordinance was made in the Advertiser on June 24, 2022.

